



2.65 Acres Zoned R2

2nd Ave NW, Wells, MN

(Formerly Wells Manufactured Home Park)

**Beautiful tree lined building lot
on Faribault County Road 29**

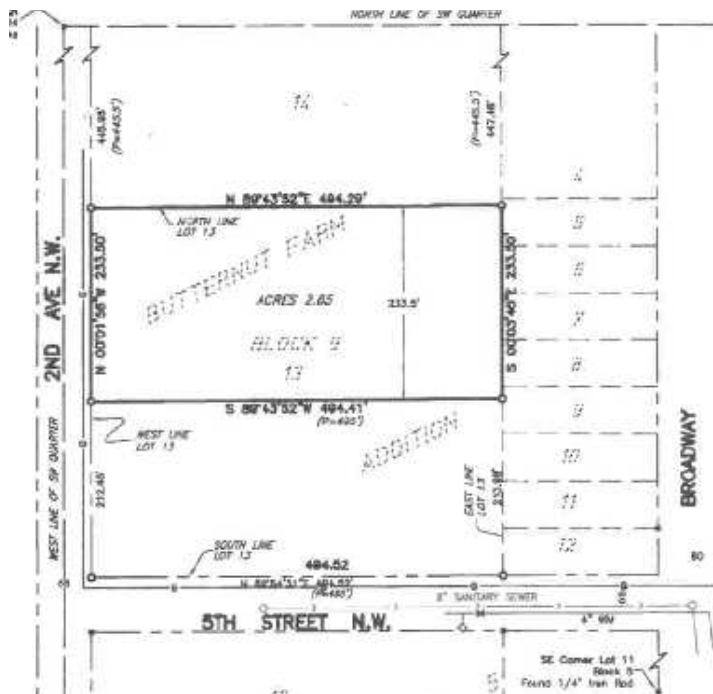
Lot is 233.50' by 494.29'

Can be subdivided.

SERVICES AVAILABLE

ELECTRIC: Currently single-phase electric power is available. This would be suitable for several single-family homes or a small multi-unit apartment building. Most small to medium commercial or industrial would require building out about a block of transmission line to provide three phase.

WATER: Currently the site is fed by a one and a half inch water service. This would be suitable for several single-family homes or a small-multi unit apartment building. It could be suitable for a small commercial operation, depending on the volume of water needed.



\$25,000

Listing Agent: Zoa Heckman

Cell Phone: 507-317-8689

Office: 507-553-6959



zoa.bhrealty@gmail.com

www.bradheggenrealty.com

www.zoa.postlets.com

Information herein is deemed reliable, but not guaranteed.

Brad Heggen Realty, Inc. does not assume responsibility for accuracy of the above information.

